

Setting up Cab EOS Standalone operation

- 1. You must have the CAB driver installed**
- 2. Plug a USB memory (thumb drive) into a free USB port**

Designing a label

The following instructions require that wizards not be used in CABLABEL R2+(which I'll call CABLabel).

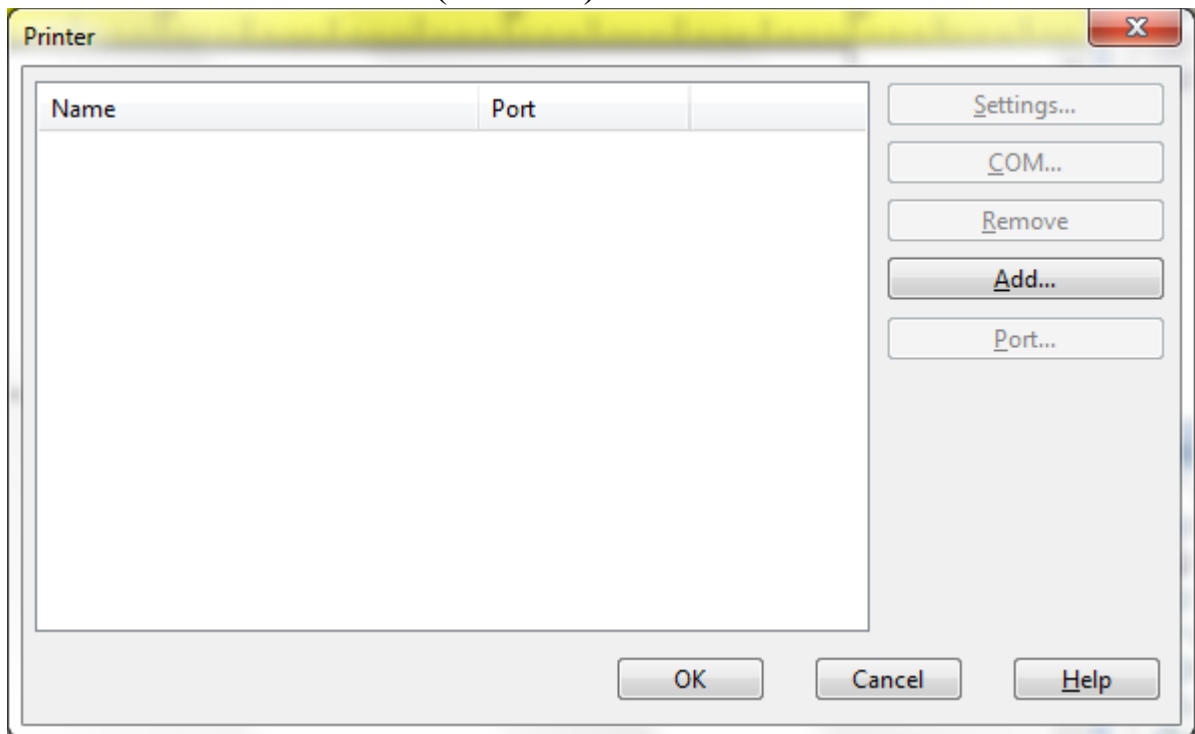
To deactivate them, click on "Tools" and "Options". Under "Wizards", click "Unselect All" and "OK"

Setting up the label parameters

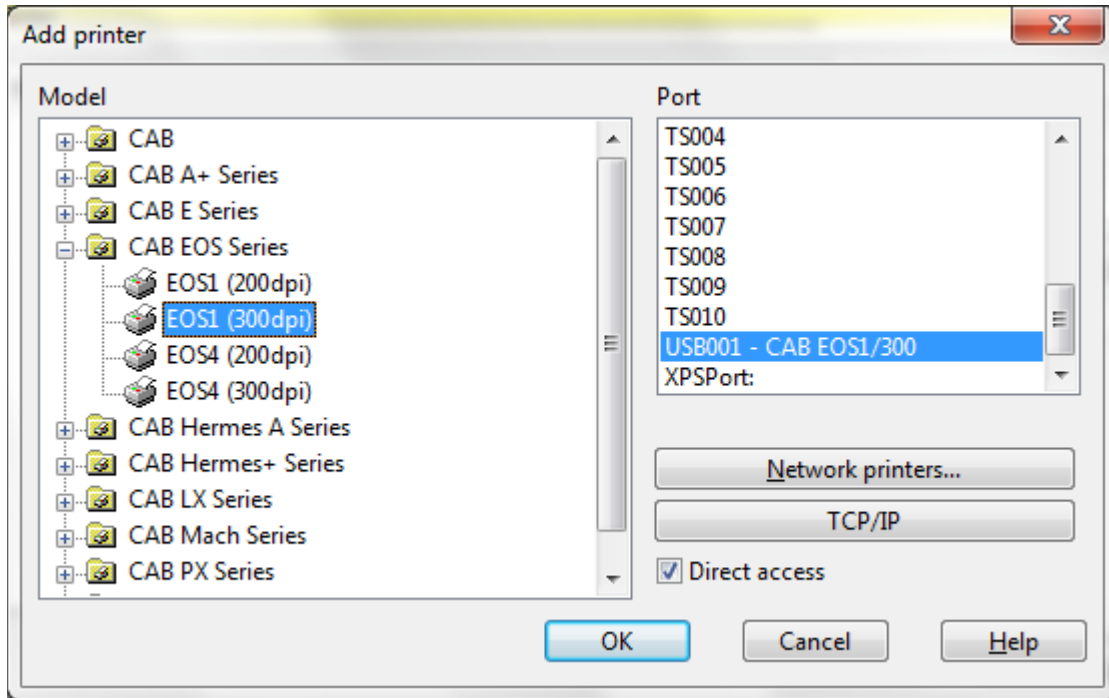
To create a new label, click "File" and "New"

Setting the Printer

Click "File" and "Select Printer" (or hit "F5").



Click “Add”

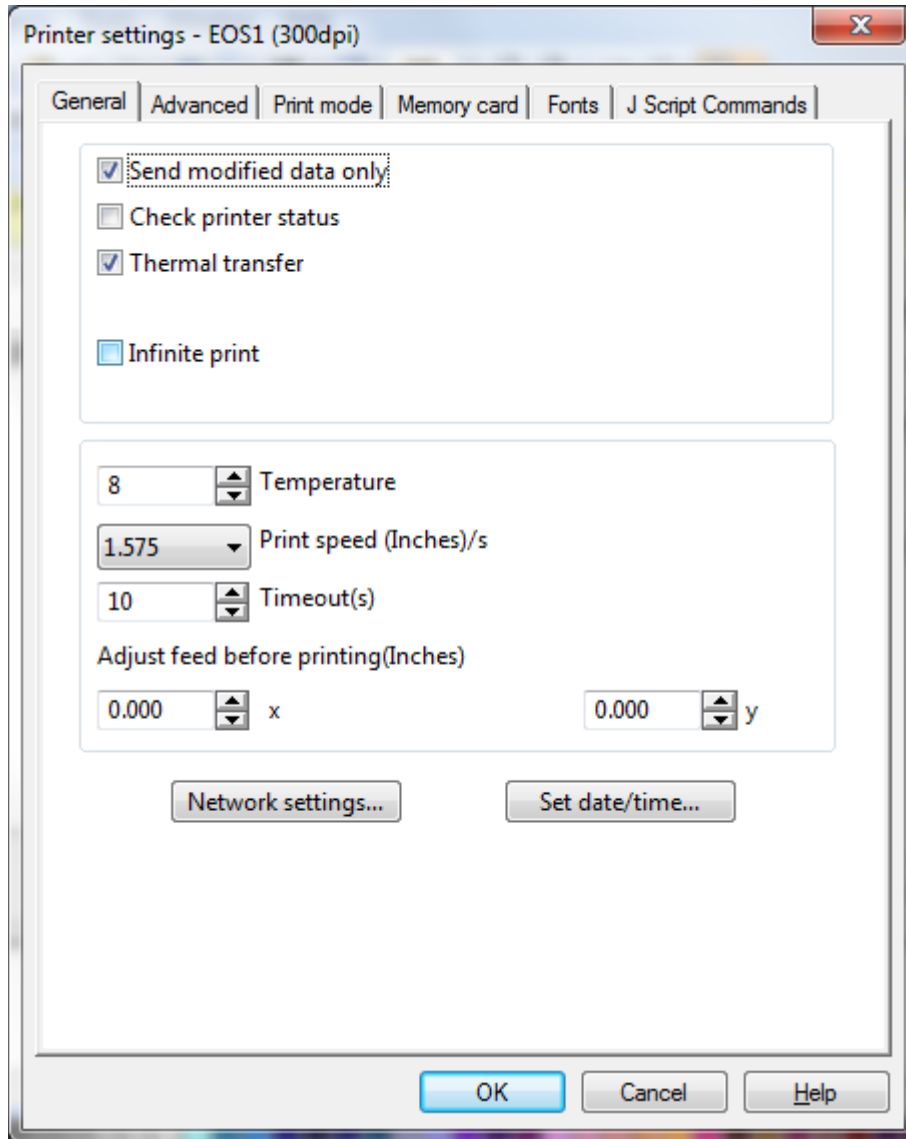


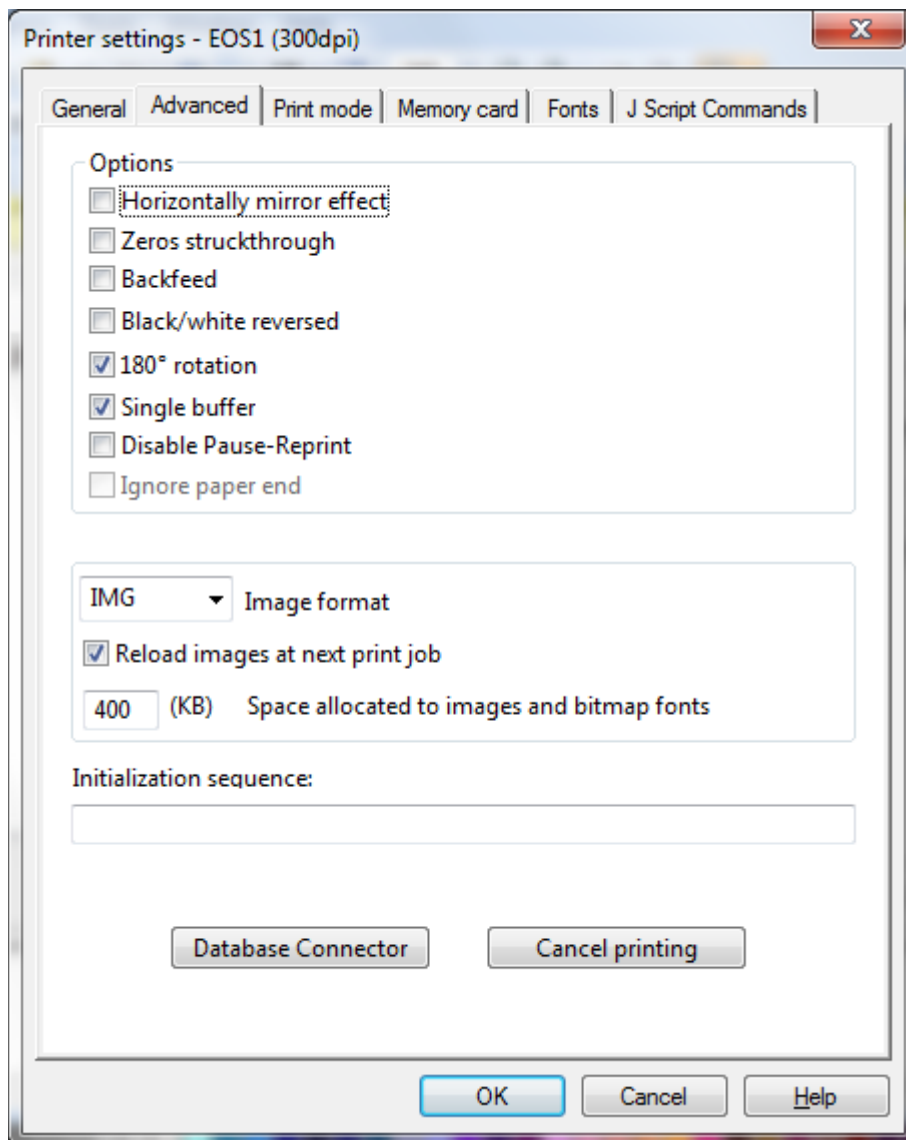
You can only select CAB printers.

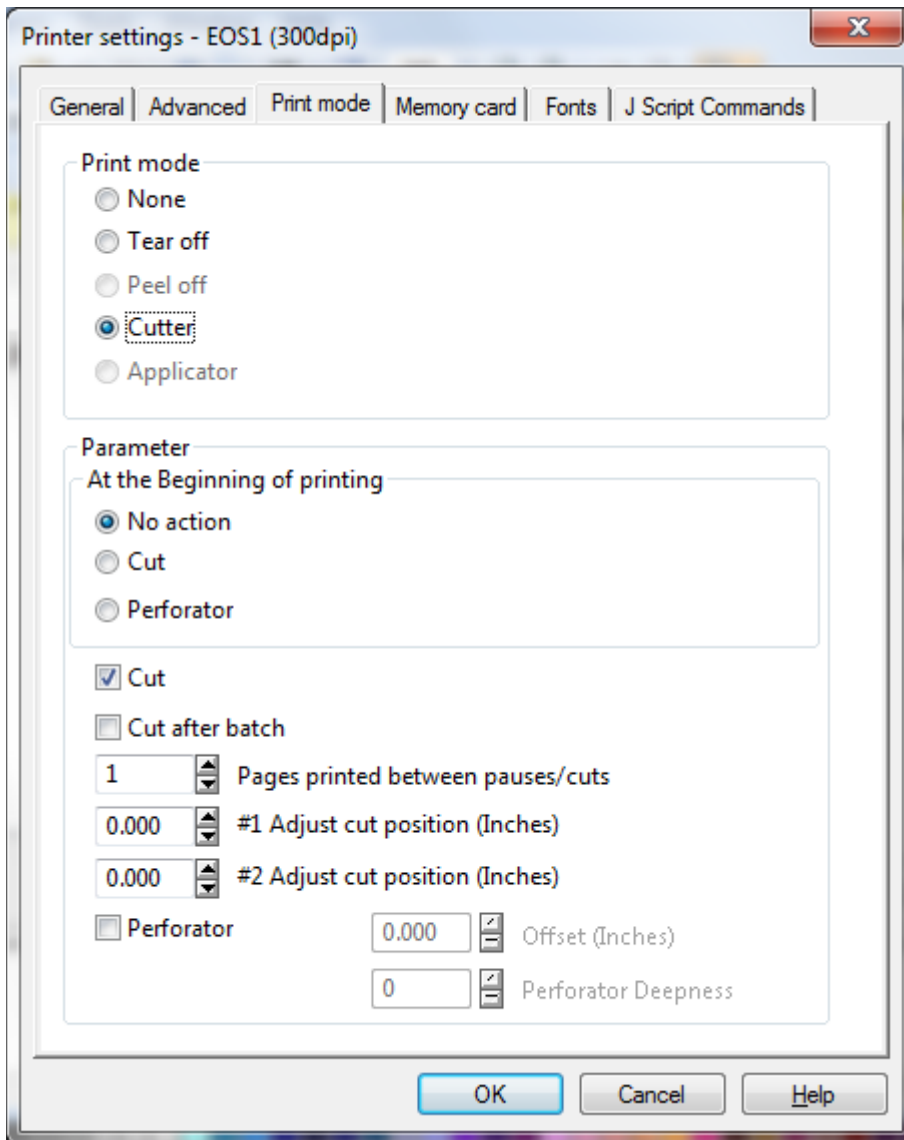
Select the EOS printer which matches your, and select the proper port.

Click Settings

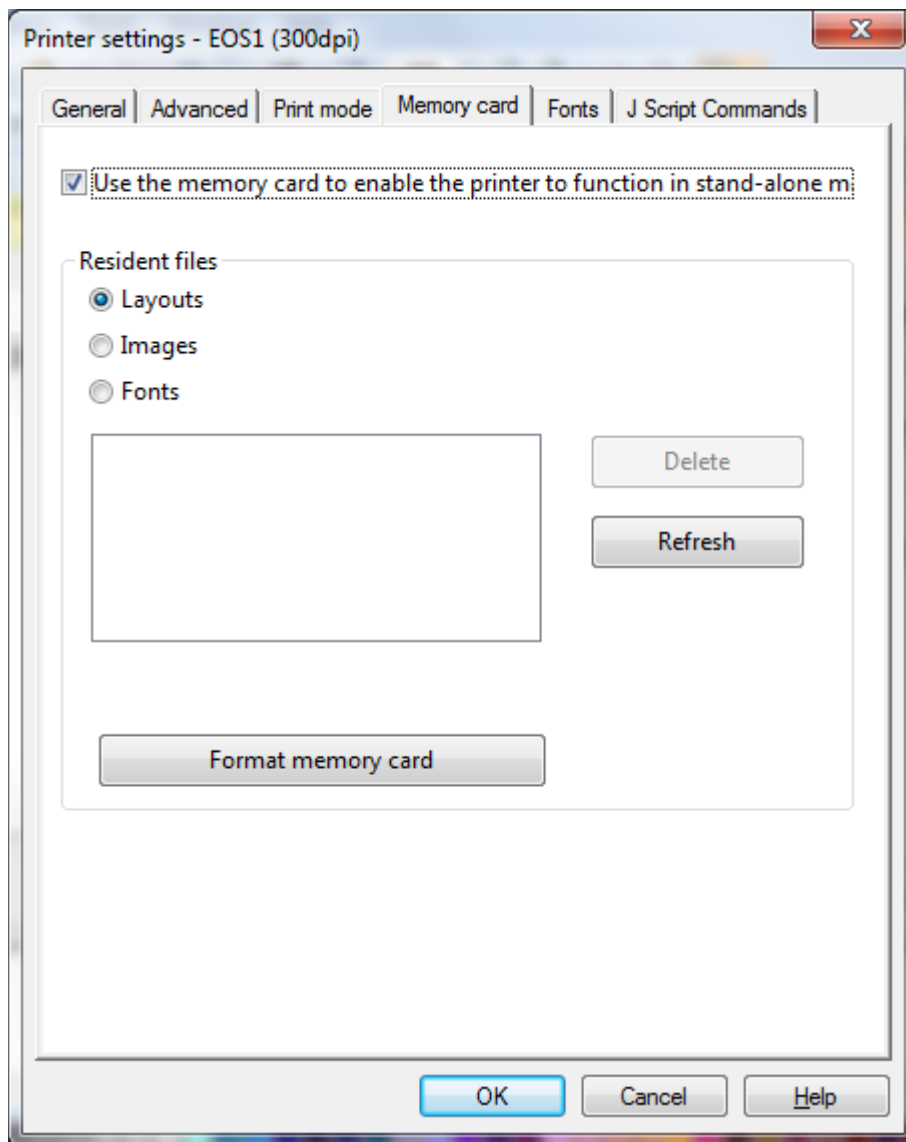
Printer Settings



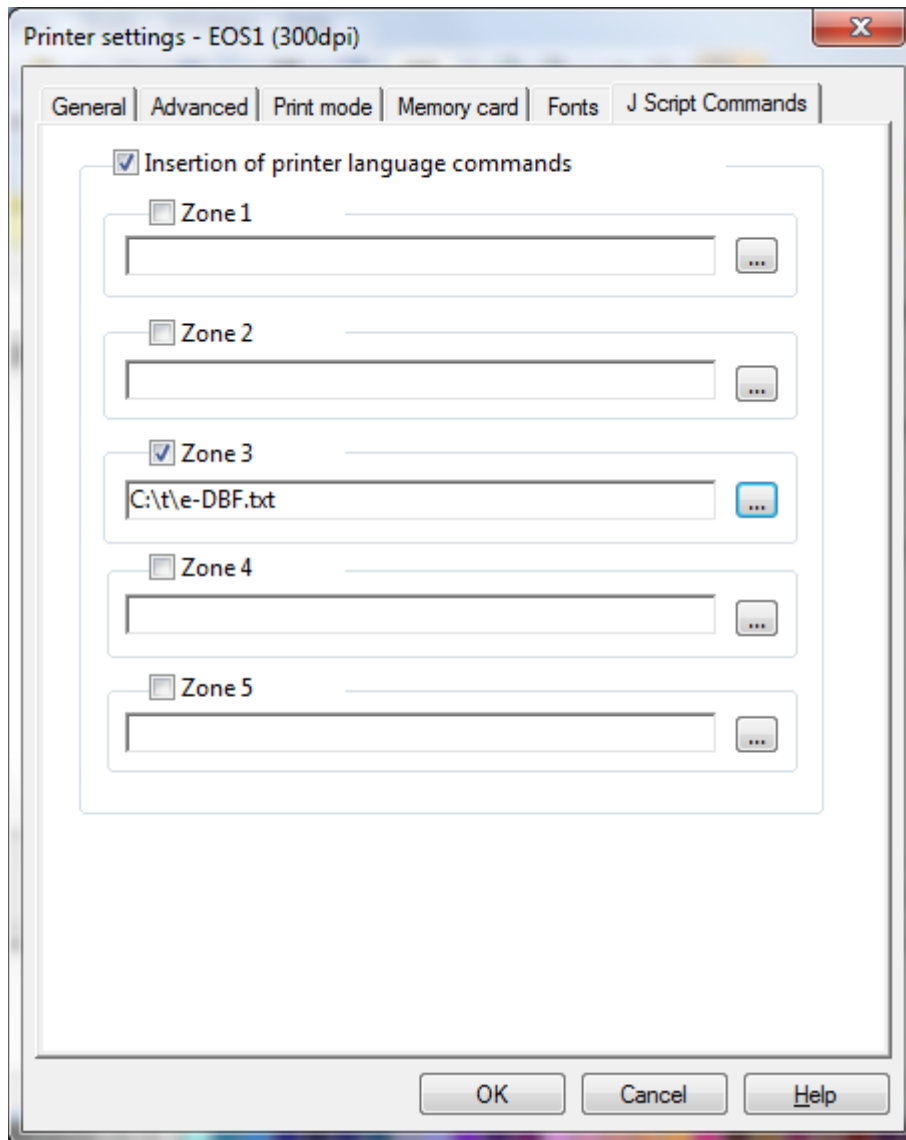




Make sure "Cutter" is selected if one is used.



“Use the memory card to enable the printer to function in stand-alone mode” must be checked.



The content of the file "C:\t\e-DBF.txt" which is included is

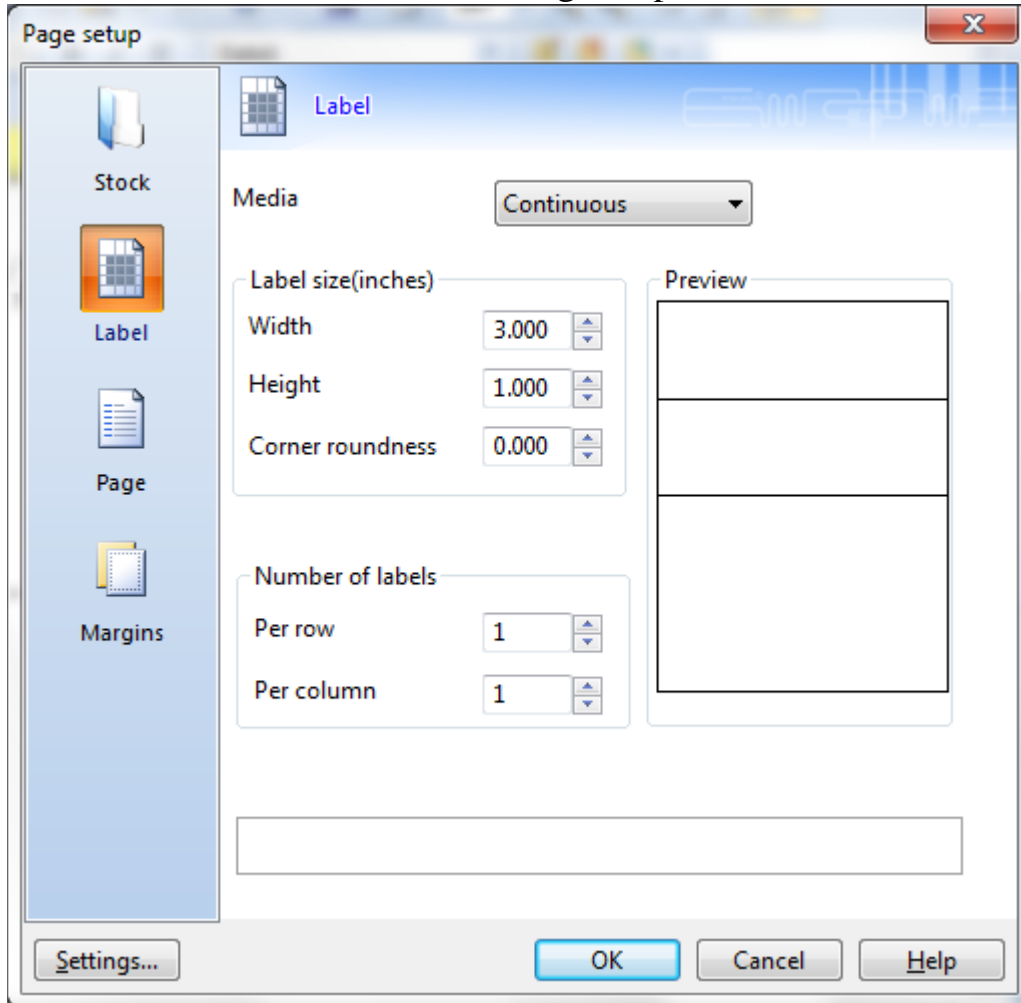
E DBF;TEST

"E DBF;" being the command to the printer to include a DBF file, "TEST" being the file (the full file name is "TEST.DBF" and must be placed in the "MISC" folder on the USB drive.

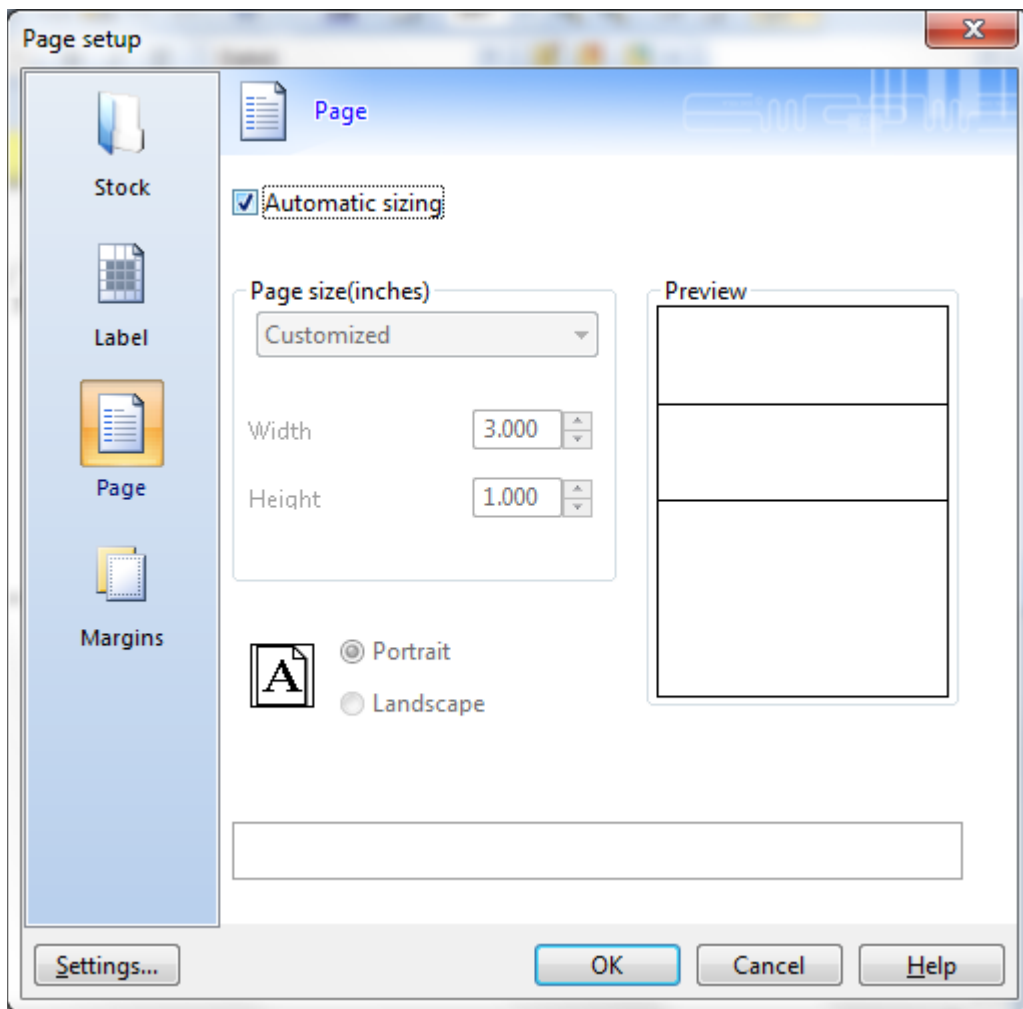
If no database is used, "Zone 3" is un-checked.

Setting the label parameters

From the main screen, click ‘File’ and ‘Page Setup’



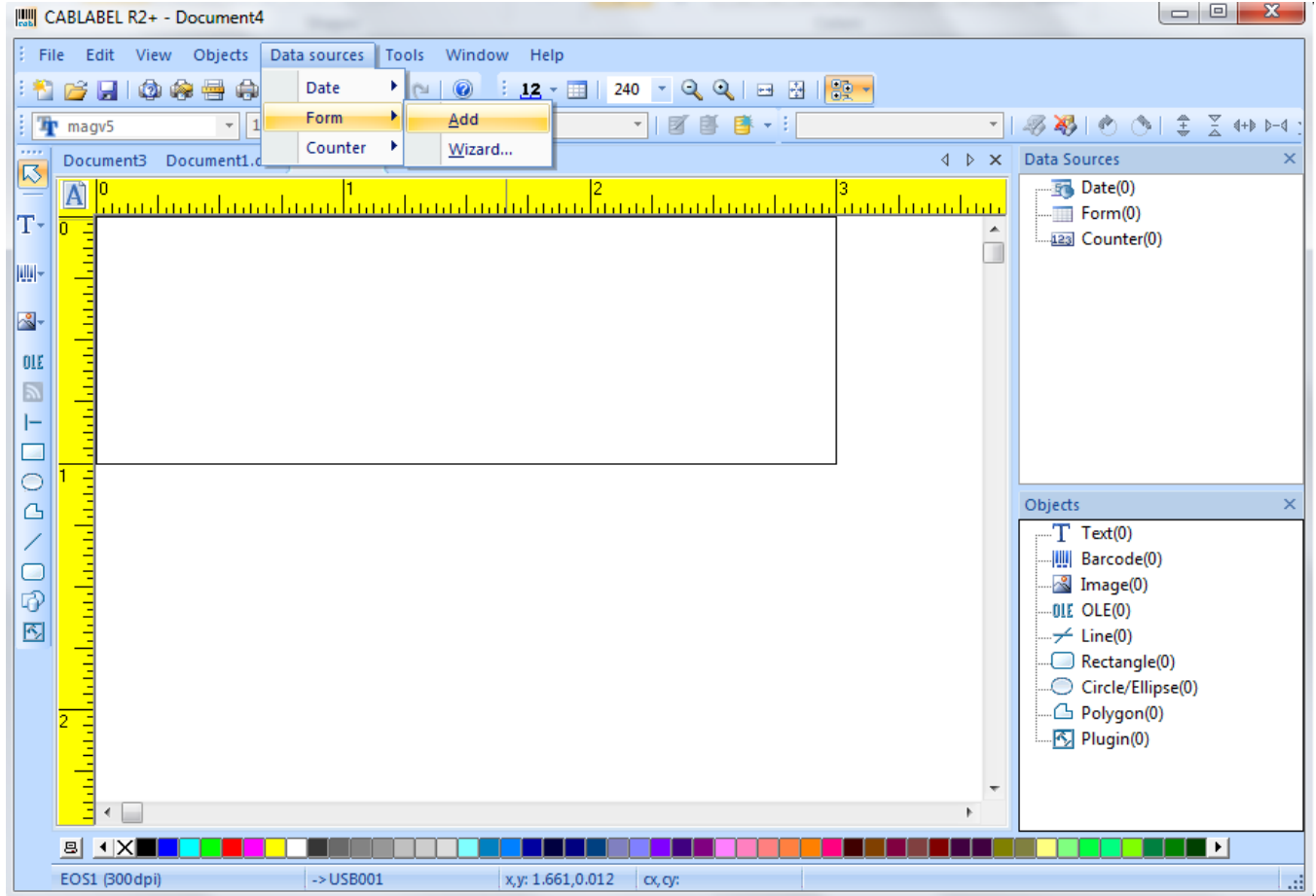
Click on Label. Enter the Height and width, number of labels per row and column (usually 1) Also, not the media setting. If you are using the cutter, or have continuous label stock, select “continuous”. Otherwise, “with gap”

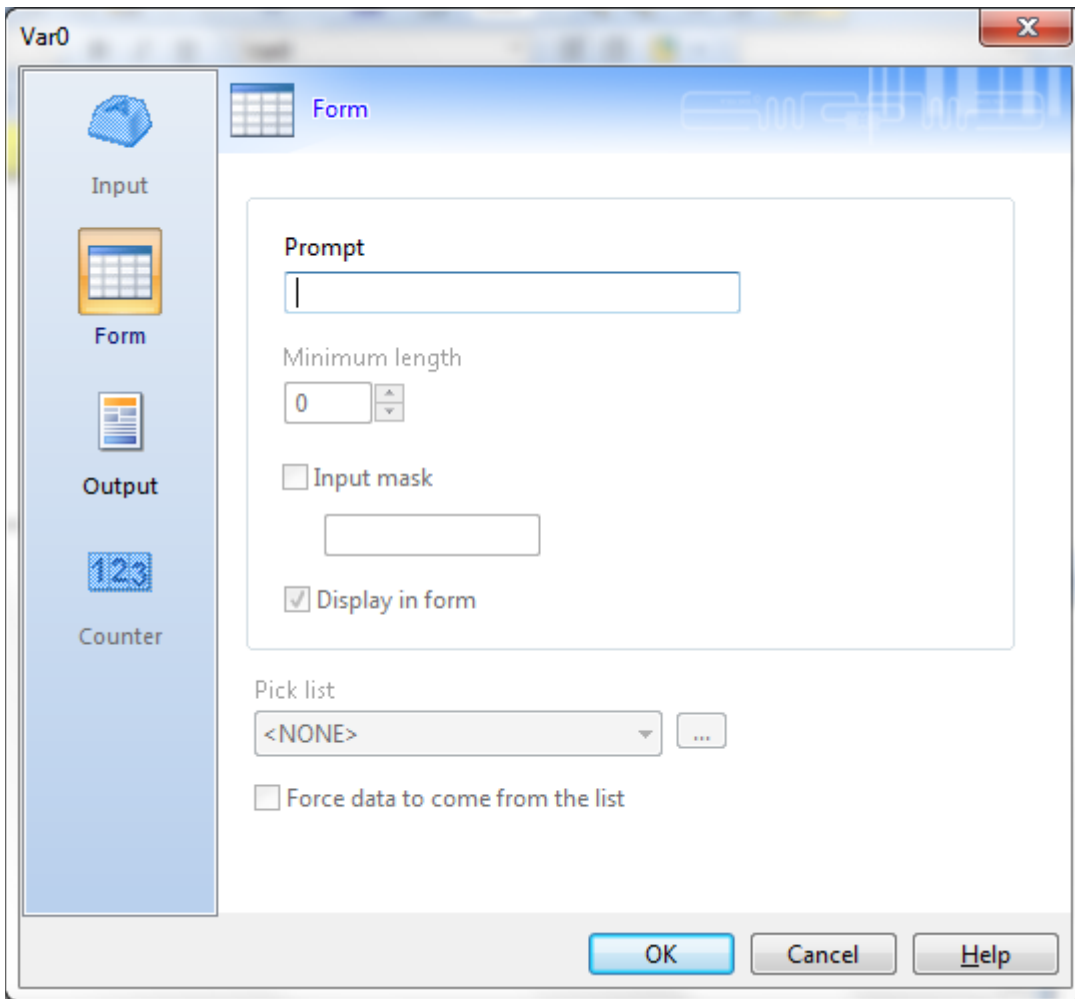


Click "Page" and select "Automatic Sizing"
Click "OK"

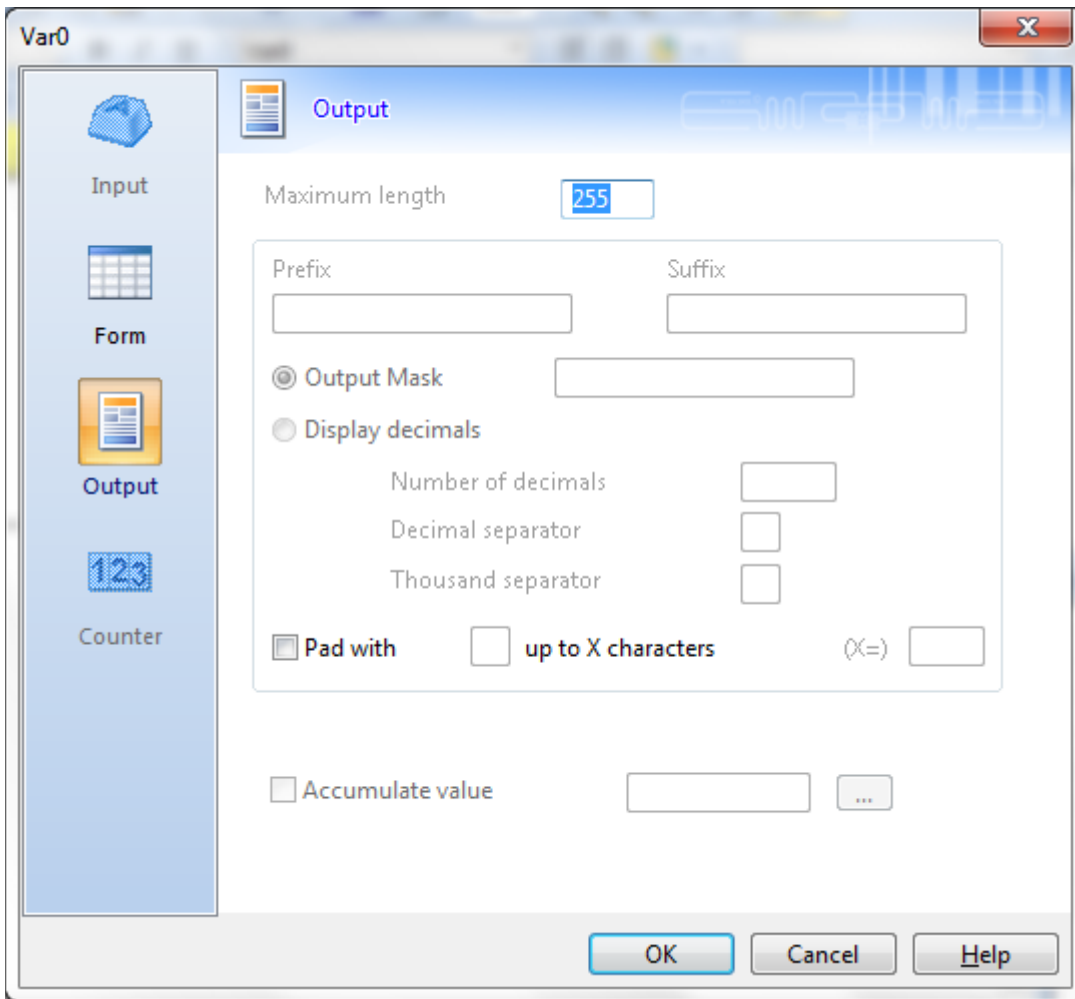
Variables are my friends

If you plan on having a field that varies from label to label, you'll need to create a variable.



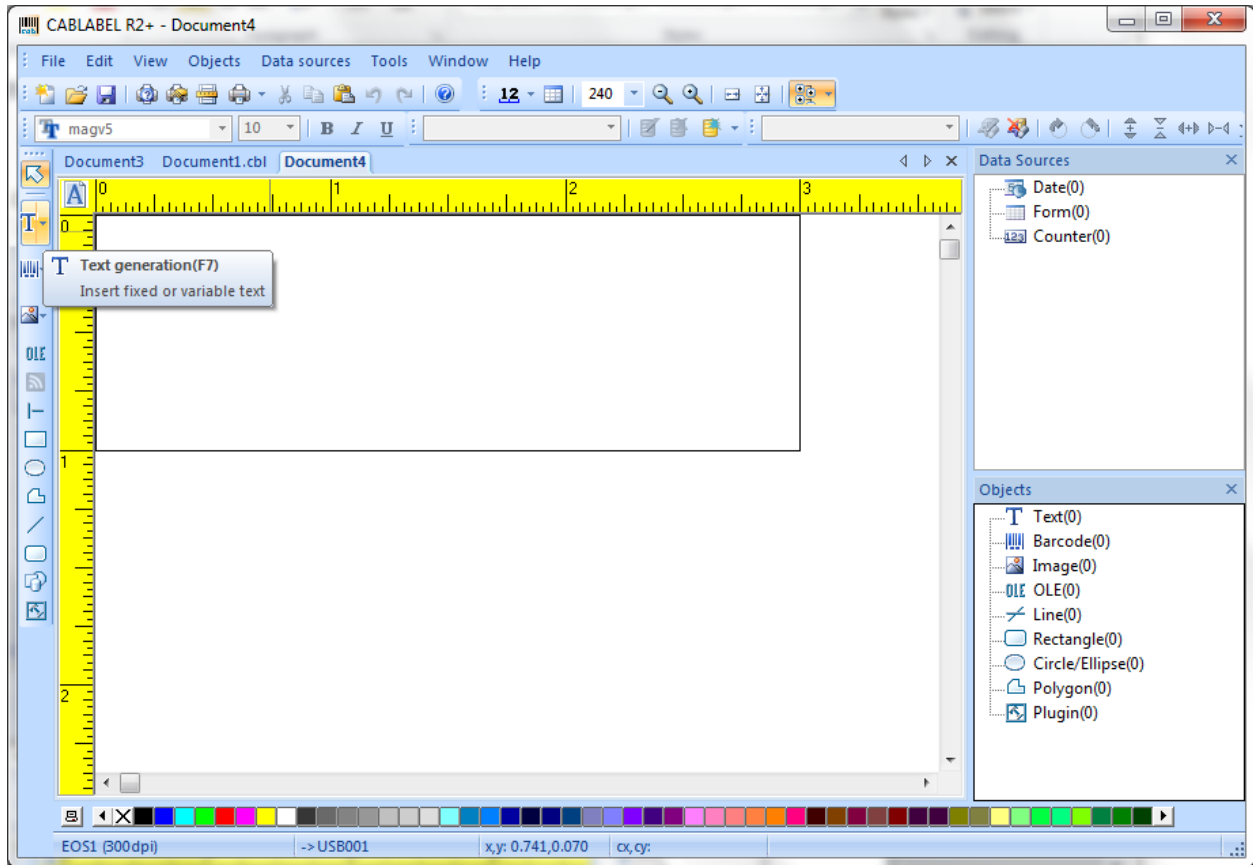


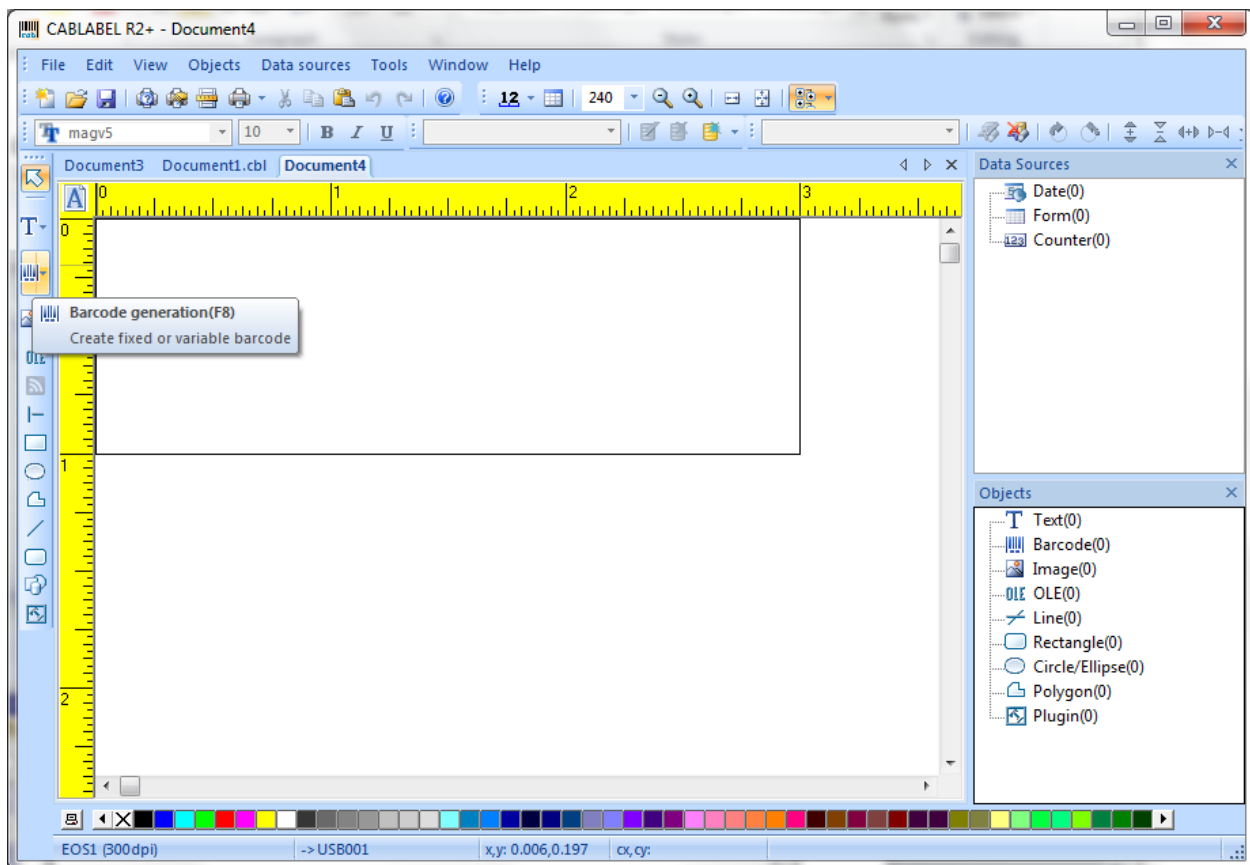
If you want the printer to prompt the user, enter it here.
If you enter nothing, it will not prompt.



This feature is especially useful with fix-width numeric fields (like barcodes)

Creating a field





Attaching a Database

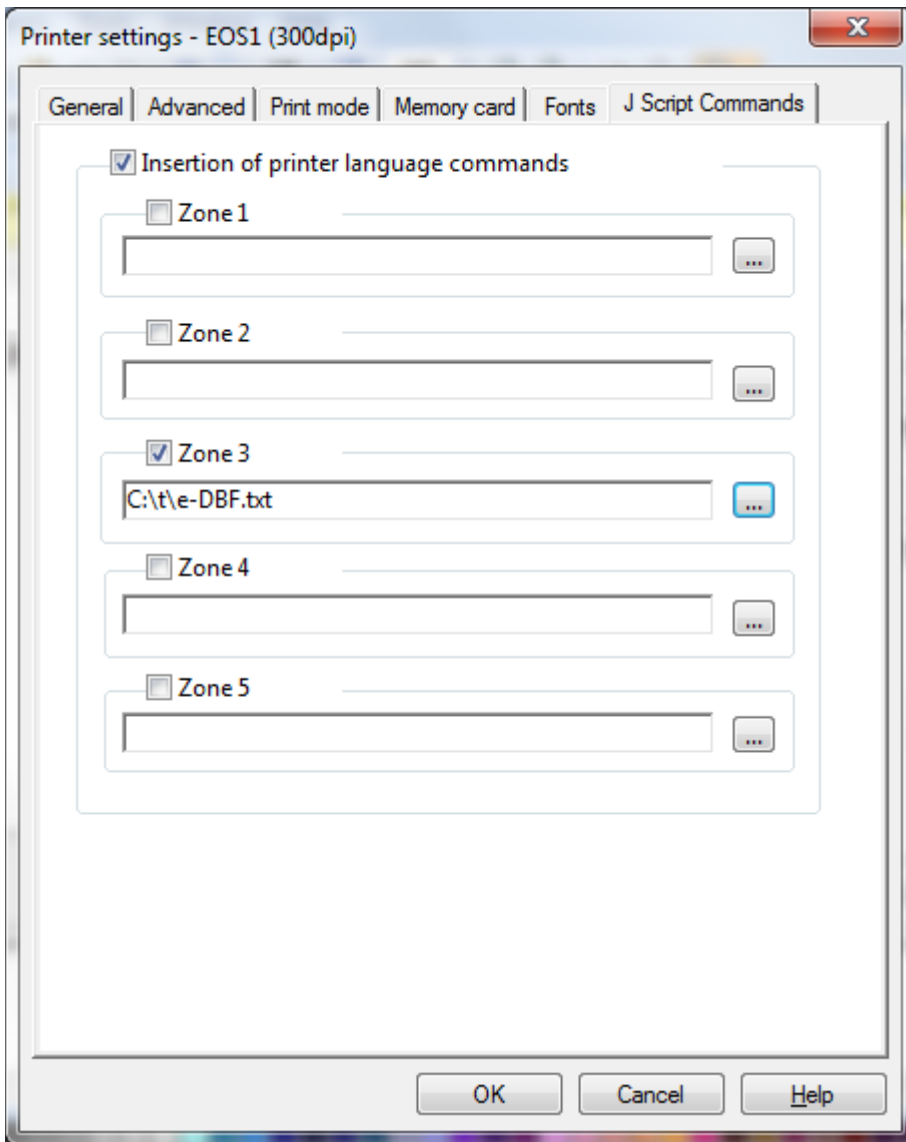
When the USB memory is formatted, there is a 'MISC' folder created. Place your DBF file in this folder.

On the computer where you've installed CABLabel, create a text file with the data indicating the name of the DBF file.

If, for example, the DBF file is "BC.DBF", the single line of your text file will be

E DBF;BC

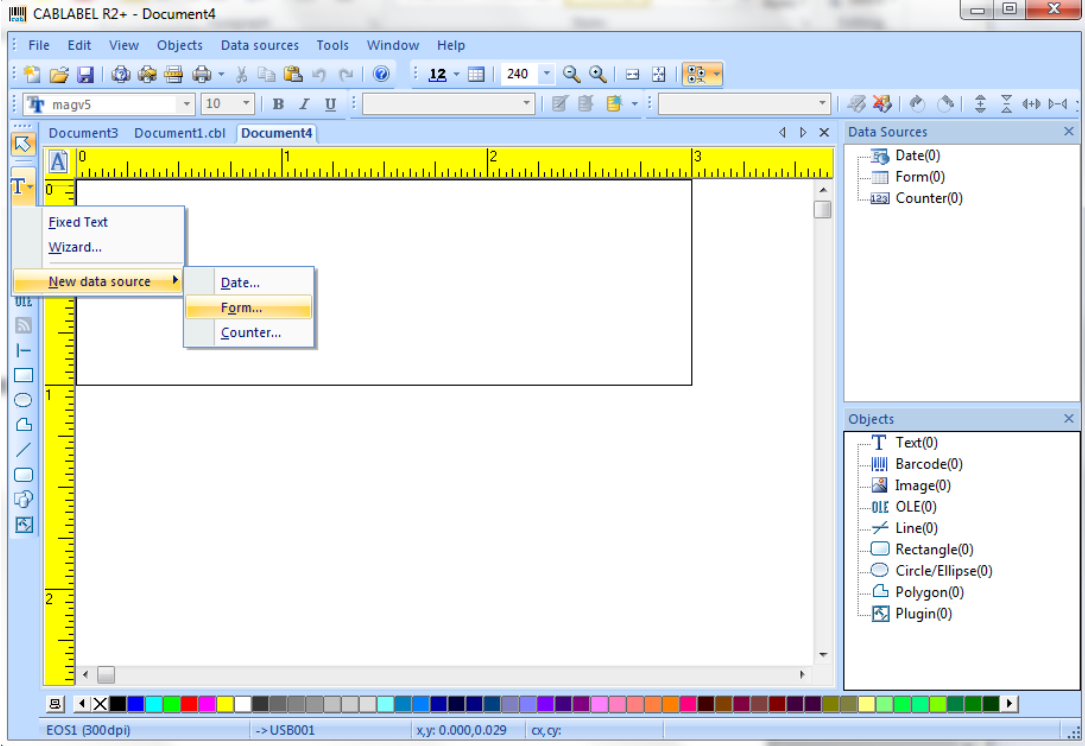
In the Printer Settings, enter the file name for Zone 3

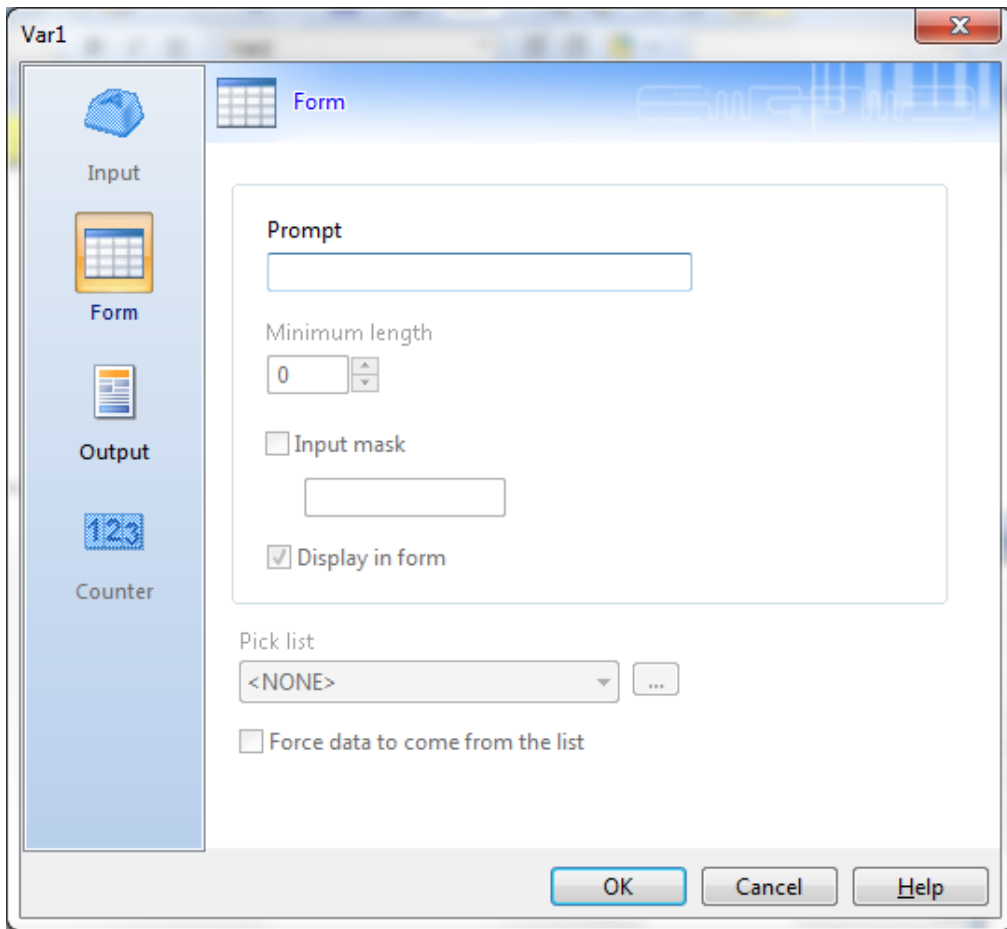


In the value area of each field of the label which imports data from the DBF, code to indicate the field is as follows:

[DBF: Key, Keyvalue, ImportField] (see pg 354 of the CAB Programming Manual)

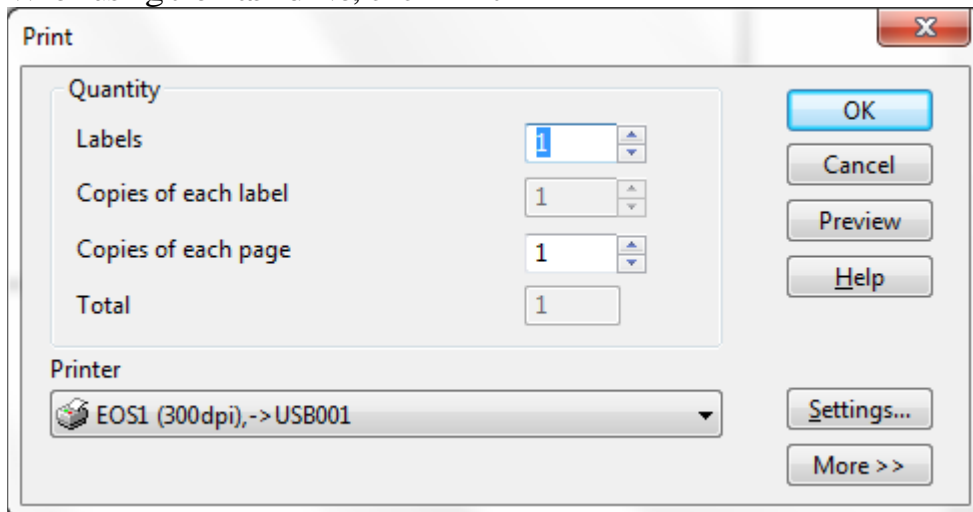
Prompt at print time



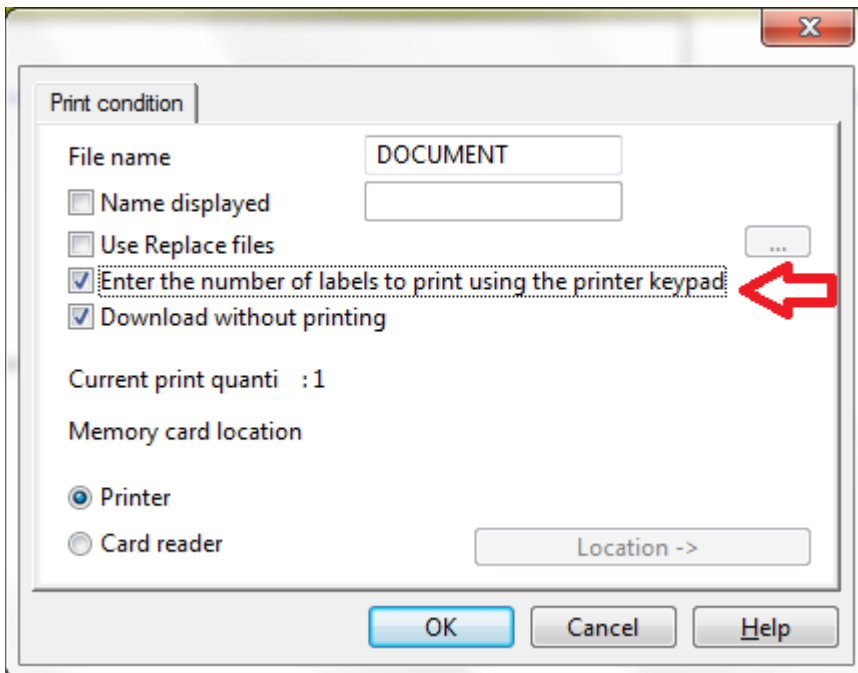


Prompting for Quantity

When using the flash drive, click Print



And OK



Select “Enter the number of labels to print using the printer keypad”