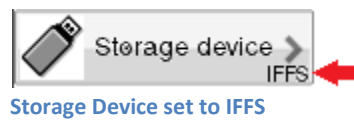




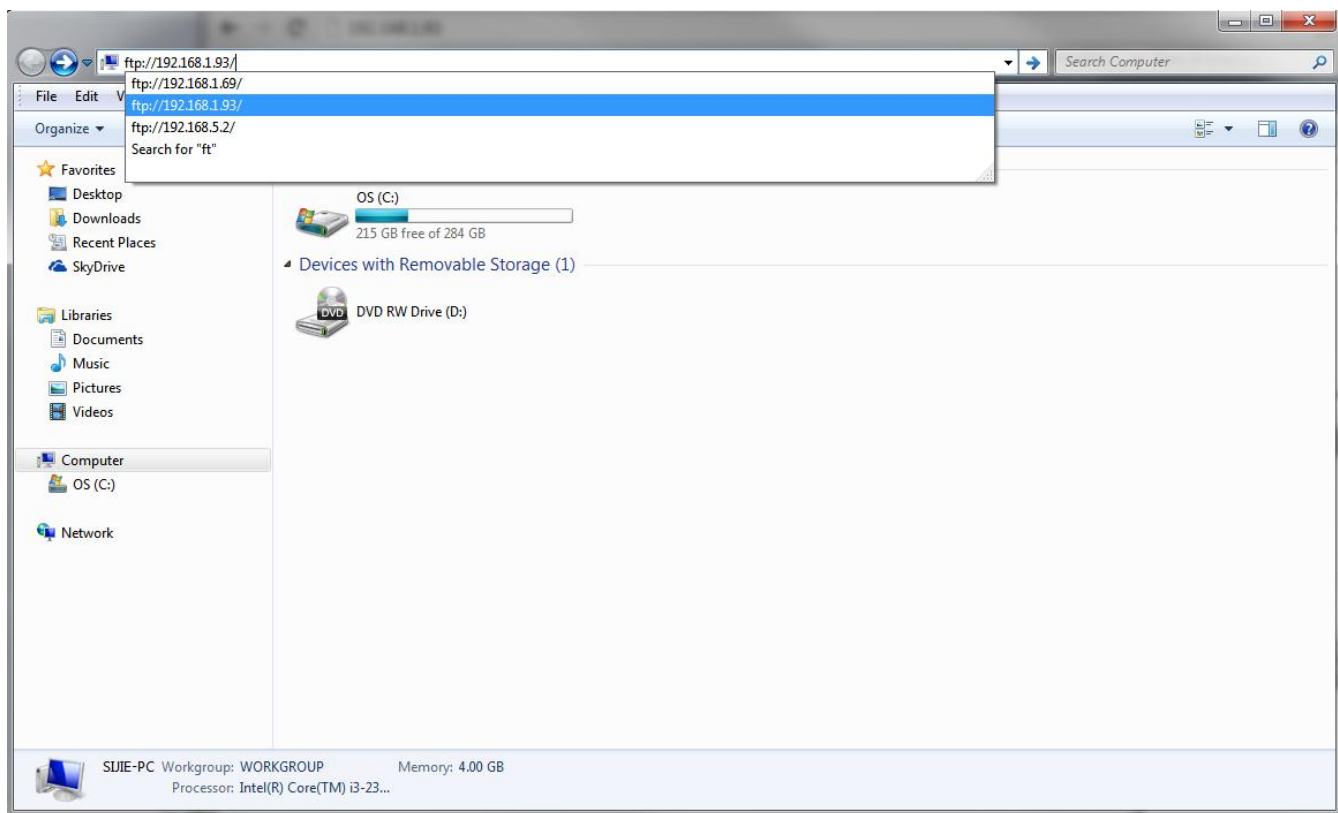
## ***Stand-Alone Tutorial***

Purpose: Access the “Storage Device” and store label files, creating a stand-alone application.

1. Check to ensure that the default memory is set to IFFS/USB/CompactFlash. If not go to Setup -> Interfaces-> Default Storage and set it to the desired device.

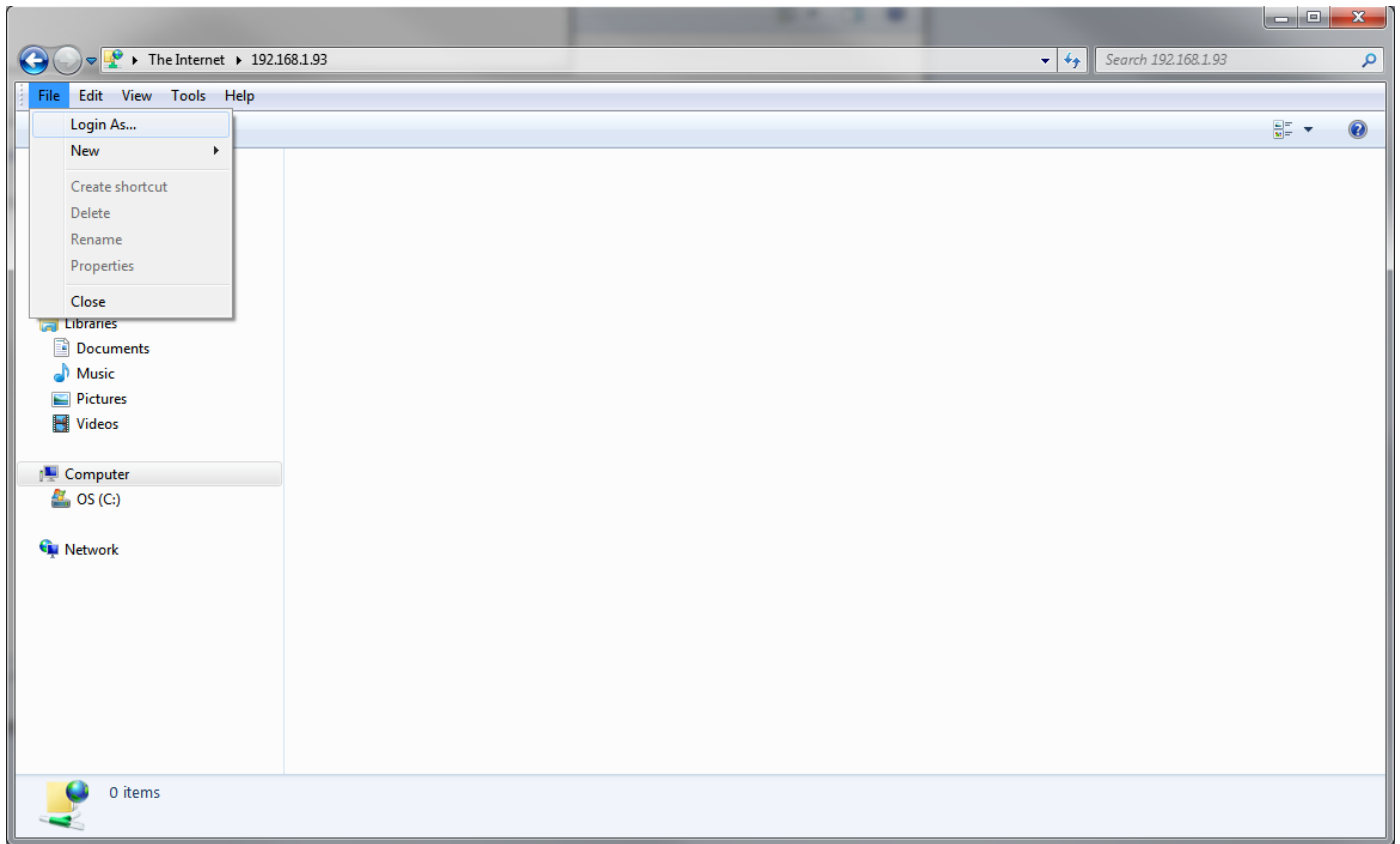


2. Now go to Start -> Computer. Type in ftp:// and then IP address of your printer (must be connected through Ethernet).



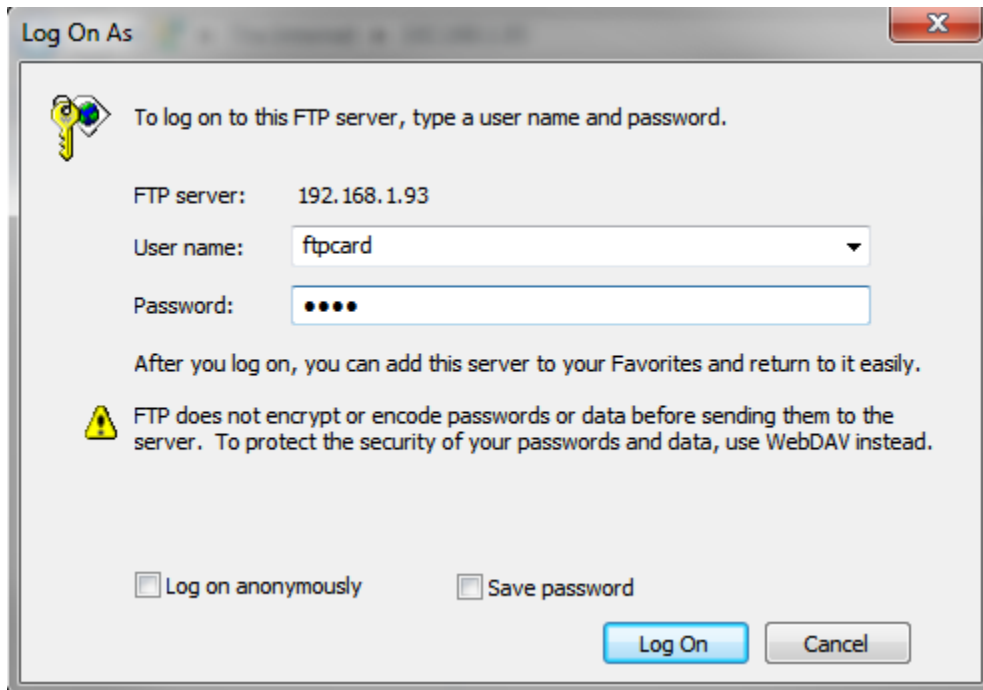
In Computer, type in <ftp://ipaddress> to gain access to the IFFS

3. Once you are connected, go to File -> Login.

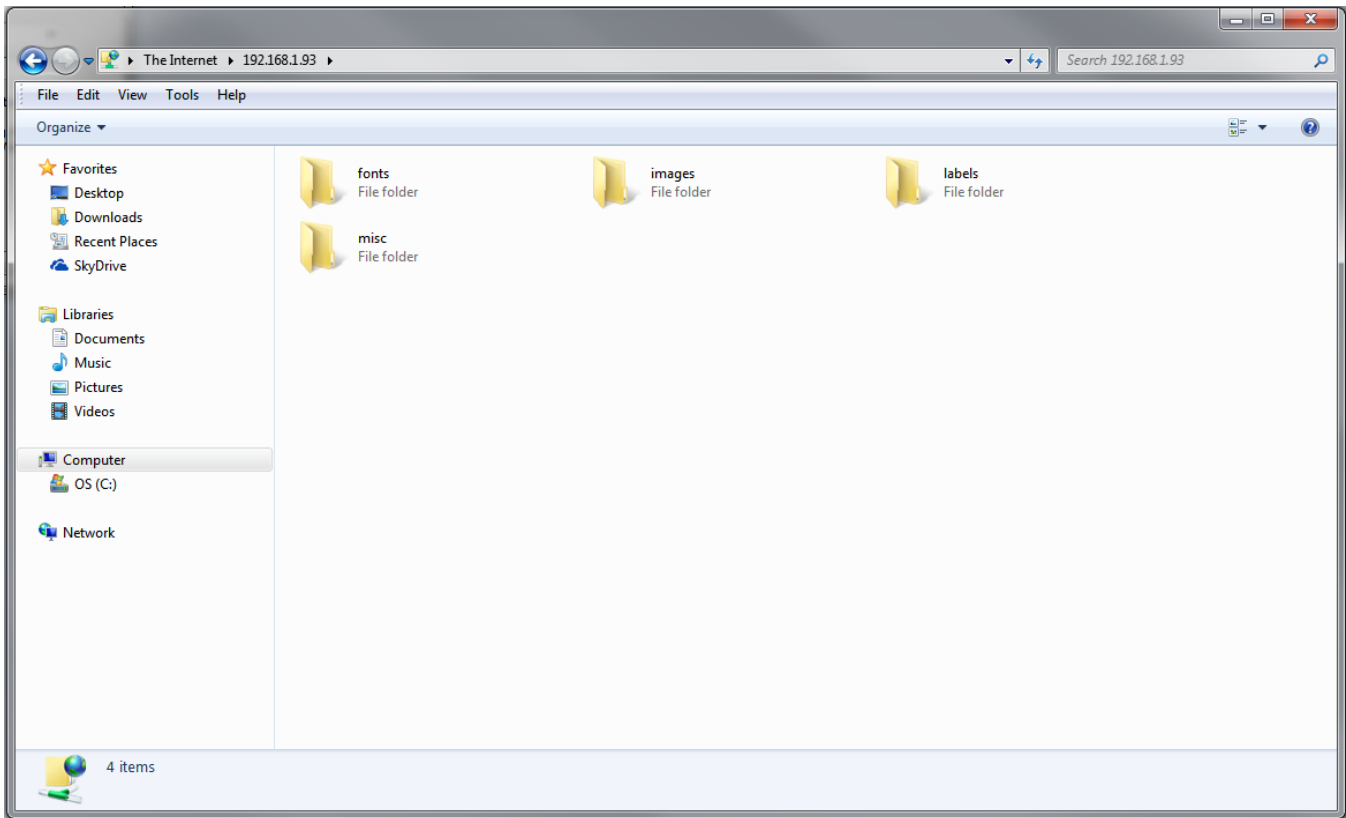


4. EOS printers - user name: **ftpcard** and password: **card**.

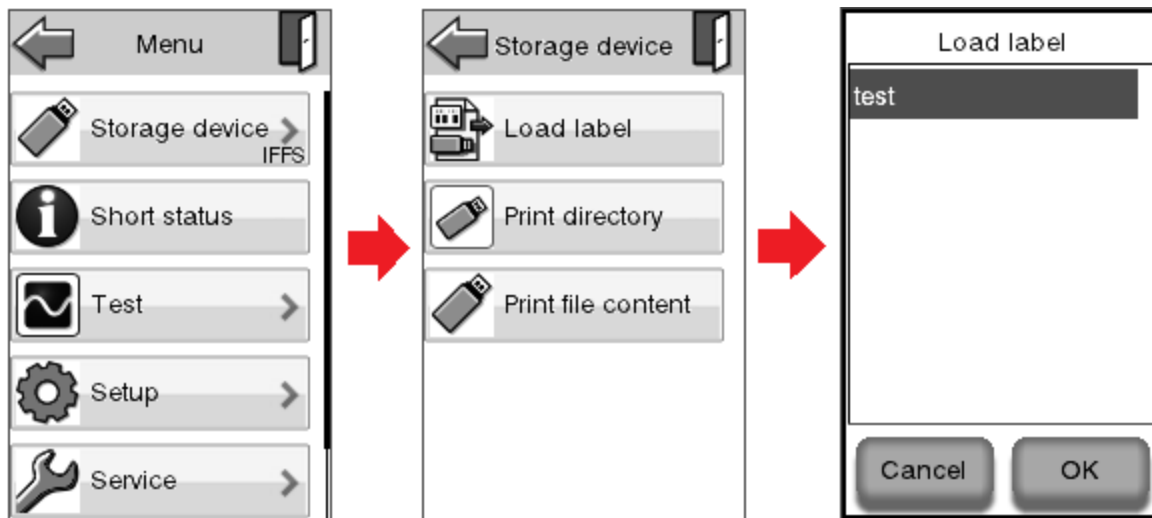
A4+ and Mach4 printers - user name: **root** and password: **root**.



5. Now you should see 4 folders if you are on the EOS, or just one if you are on the A4+.



6. Lastly, drag the file(must have .LBL extension) into the labels folder. For files using images and non-native printer fonts, it is suggested that you use the memory card feature in R2+ unless you are familiar with J Script.



Going back to the printer display, the storage device should now display the file we just loaded. A4+/Mach4 models have one default folder named "card".