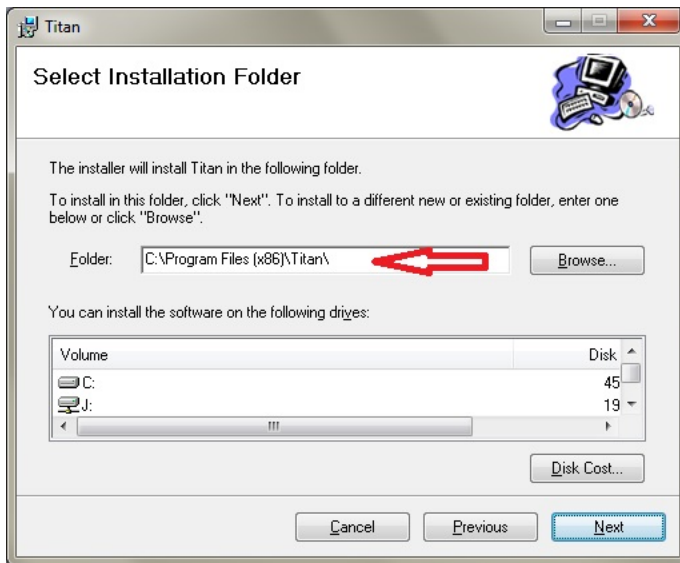


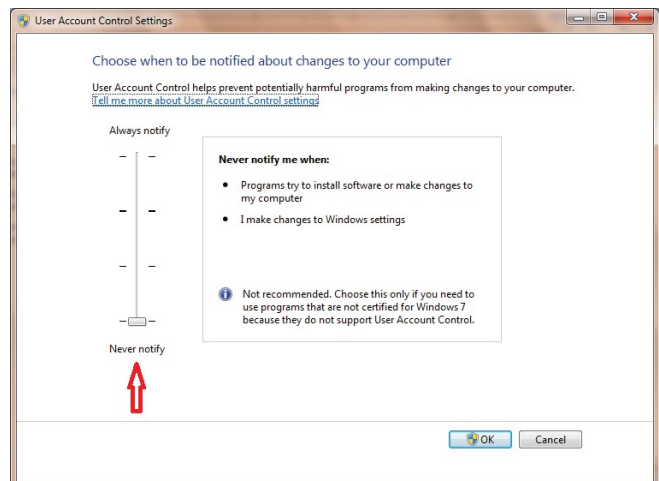
Procedure to Set-Up Titan Label Writer to Run in Windows 7



Instead of the default Installation folder shown to the right ("C:\Program Files\Titan" or "C:\Program Files (x86)\Titan"), change it to "C:\Users\Public\Documents\Titan".

Click on Start.
In the Search box, type in User account settings and press Enter.

Using the left mouse button, move the slide bar to Never Notify. Click OK.



On the desktop, Right Click on the Titan Icon. Click on Properties.
Click on the Compatibility Tab.
Click on the box for:
Run this program in compatibility mode.
Select Windows XP (Service Pack 3).
Click Apply.
Click OK.

Titan Label Writer is now setup to work with Windows 7.

If Titan flashes on the screen and then disappears, you will have to download and install <http://www.titanlabelwriter.com/comdlgfix.msi>